



Remote Maintenance System for Level Crossings



APPLICATIONS

Remote diagnostic and maintenance for relais based level crossing protection systems

ZELISKO

REMOTE MAINTENANCE SYSTEM FOR LEVEL CROSSINGS



WITH THEIR REMOTE MAINTENANCE SYSTEM, ZELISKO PROVIDE a technologically advanced solution for commonly used relais based railway crossing protection systems.



Mass: 19-inch rack with 3 height units

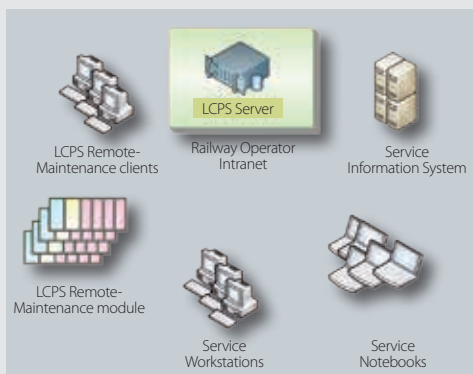
Design: 6 slots (plug-in card) each with its own front panel

Interface: 2 x Ethernet
40 x digital inputs
8 x relais outputs

Configurators: may change all configuration parameters for all level crossings

Maintenance users: may carry out remote maintenance on all level crossings

Guests: may access the remote maintenance system and view current status of all level crossings



FOLLOWING AUTHORIZATION LEVELS ARE POSSIBLE

Administrators: may manage all master data on the server for the level crossings

Any authorized person may also send orders for remote maintenance from their service workstation or service notebook via a Web application.

REMOTE MAINTENANCE SYSTEM FOR LEVEL CROSSINGS

FUNCTIONS

- Monthly maintenance activities at level crossing systems using relay technology can be implemented through a remote control according to § 80
 - > Check for ground faults
 - > Check for lowering on time
- All reports which are available at the position writer will be transferred to a central server and stored
- Detection and transmission of operating anomalies in a central server
- Service information system
- Remote diagnostic

ADVANTAGES

- Time savings for monthly maintenance (loss of travel time)
- Reduction of travel costs for regular trips to the level crossings
- Automatic documentation on the implementation of remote maintenance
- Automatic collection of information about operation of level crossings
- Support for early detection of irregularities
- Support for de-bugging
- Central availability of data from the local position writer

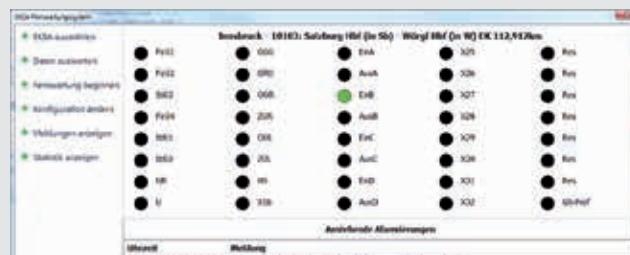
COMPONENTS

- Remote module for level crossings
- GPS Router (to connect to operators' network)
- EKSA Server (including database server)
- Web application to service workstation
- Web application to service laptops

The memory in the local module allows a recording time of at least 6 months whereby the changes to the signal input with date and time are saved (to 1/10th second). Every user action is also logged for at least 6 months.

The current status is displayed for the selected level crossing, which also includes confirmation if the connection to the central server is available or if the level crossing is in remote maintenance status.

The WEB interface of the application software includes a graphical overview of the route with the corresponding state information of each level crossing. The user can integrate a level crossing for more precise status information.



» Input status = position write

The screenshot shows a table of level crossings with the following columns: BfZ, Strecke-Num., Strecke-Namen, EK-Klamm., and Unregelmäßigkeiten. The table lists multiple entries for the Salzburg Hbf (in Sb) - Wörgl Hbf (in W) route.

BfZ	Strecke-Num.	Strecke-Namen	EK-Klamm.	Unregelmäßigkeiten
Innsbruck	10103	Salzburg Hbf (in Sb) - Wörgl Hbf (in W)	112,832	0
Innsbruck	10103	Salzburg Hbf (in Sb) - Wörgl Hbf (in W)	112,832	1
Innsbruck	10103	Salzburg Hbf (in Sb) - Wörgl Hbf (in W)	145,736	0
Innsbruck	10103	Salzburg Hbf (in Sb) - Wörgl Hbf (in W)	146,855	0
Innsbruck	10103	Salzburg Hbf (in Sb) - Wörgl Hbf (in W)	147,357	2
Innsbruck	10107	Salzburg Hbf (in Sb) - Wörgl Hbf (in W)	148,131	0
Innsbruck	10103	Salzburg Hbf (in Sb) - Wörgl Hbf (in W)	150,224	0
Innsbruck	10103	Salzburg Hbf (in Sb) - Wörgl Hbf (in W)	153,797	0
Innsbruck	10103	Salzburg Hbf (in Sb) - Wörgl Hbf (in W)	153,944	0
Innsbruck	10103	Salzburg Hbf (in Sb) - Wörgl Hbf (in W)	156,842	1
Innsbruck	10103	Salzburg Hbf (in Sb) - Wörgl Hbf (in W)	157,635	0
Innsbruck	10103	Salzburg Hbf (in Sb) - Wörgl Hbf (in W)	158,595	0

» User interface – selection of the level crossing

**Dr. techn. Josef Zelisko,
Fabrik für Elektrotechnik und Maschinenbau
Gesellschaft m.b.H.**

Beethovengasse 43-45
2340 Mödling
Austria
Phone: +43 2236 409-2229
Fax: +43 2236 409-2279



WWW.ZELISKO.AT
WWW.KNORR-BREMSE.COM



Knorr-Bremse Group

This publication may be subject to alteration without prior notice. A printed copy of this document may not be the latest revision. Please contact your local Knorr-Bremse representative or check our website www.knorr-bremse.com for the latest update. The figurative mark „K“ and the trademarks KNORR and KNORR-BREMSE are registered in the name of Knorr-Bremse AG. Copyright 2013 © Knorr-Bremse AG. All rights reserved. Including industrial property rights applications. Knorr-Bremse AG retains any power of disposal, such as for copying and transferring.